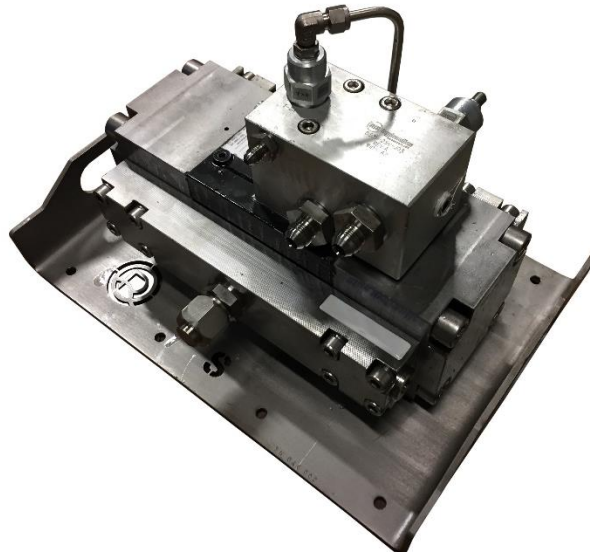


RQ-046 – 690 Bar Water Jetter



Key Features:

- Industry recognised standard cleaning tool.
- Can be adapted to use as a fluid injection unit.
- Robust, easy to use and easy to fix pumps.

WHATS INCLUDED

690 Bar Jetting System.
ROV Handle and Point Jetting Nozzle.
All Operational Hoses.
Suction Filter.
Operations Manual.
Certificate Pack.

OPTIONS

Spares Kit.
Dual Nozzle Lance.
Nozzle kit; Flat Jetting Nozzle and Rotating Nozzle.
ROV handle options; D-Type, Fishtail, T-bar.

Description

The 690 Bar Pressure Water Jetting System is based around the industry standard Dynaset HPW pump. No other pump gives the same power and reliability.

The system can be connected to any subsea reservoir by the suction port (8 JIC) and comes with a Filtration Unit for sea water jetting. The system comes with a Barracuda Jetting Nozzle.

The 690 Bar Pressure Water Jetting System produces a maximum pressure of 690 Bar (10,000 PSI) with a flow rate of 30 Lpm.

RQ-046 – 690 Bar Water Jetter

WHATS INCLUDED

690 Bar Jetting System.
 ROV Handle and Point Jetting
 Nozzle.
 All Operational Hoses.
 Suction Filter.
 Operations Manual.
 Certificate Pack.

OPTIONS

Spares Kit.
 Dual Nozzle Lance.
 Nozzle kit; Flat Jetting Nozzle
 and Rotating Nozzle.
 ROV handle options; D-Type,
 Fishtail, T-bar.

Overall Specifications	
Weight in Air	55kg
Weight in Water	47kg
Dimensions	L400 x W290 x 210mm
Suitable Media	Sea Water, Glycol, Hydraulic Oil
Input / Outputs	
Max Input Pressure	210 BAR (3,000 PSI)
Max Input Flow	60-140 LPM
Max Output Pressure	690 BAR (10,000 PSI)
Max Output Flow	30 LPM
Hydraulic Connections	
Pressure	8 JIC
Return	8 JIC
Pilot	4 JIC
Suction	8 JIC